

ECONOMIC INDICATORS

Second quarter of 1999



Banco de la República
Colombia

FRONT PAGE
ANTONIO RODA

Nocturn I
Paper Engraving

1996

BANCO DE LA REPÚBLICA COLLECTION

Review of the economy during the second quarter of 1999

During the second quarter of 1999, the Colombian economy continued to display strong recessionary signs. In this period, Gross Domestic Product declined by 7.6%. The recession was also evident in the increase in the unemployment rate, which registered a historical high of 19.8% in June. Inflation, as measured by the CPI, fell from 20.7% to 9.0% between June 1998 and June 1999. At the end of the quarter, the market exchange rate reached a value of \$1,732.1 pesos per dollar, leading to an annual devaluation of 27.1%. For 1999, the current account deficit is expected to decrease substantially to near 3.2% of GDP by the end of the year.

REVIEW OF THE ECONOMY

YEARS	GROWTH			UNEMPLOYMENT RATE	CURRENT ACCOUNT	INTERNATIONAL RESERVES
	GDP (%)	CPI (%)	PPI (%)	(%)	(% of GDP)	(Months of imports of goods and services)
1990	4.3	32.4	29.9	10.6	1.3	5.9
1991	2.0	26.8	23.1	9.4	5.5	8.9
1992	4.1	25.1	17.8	9.8	1.8	8.8
1993	5.4	22.6	13.2	7.8	-4.0	6.9
1994	5.8	22.6	20.7	8.0	-4,4 p	7.0
1995	5.8	19.5	15.4	9.5	-5,0 p	6.3
1996	2,1 pr	21.6	14.5	11.3	-4,8 p	7.2
1997	3,2 p	17.7	17.5	12.0	-5,4 p	6,5 p
1998	0,4 p	16.7	13.5	15.6	-5,7 pr	6,0 pr
1999	-7,6 p*	9.0	6.1	19,8 p*	-3,2 pro	6,8 pro

*: Second quarter.
 p : Provisional.
 pr: Preliminary.
 pro: Projected.

Since 1994, the statistics correspond to the new Balance of Payment measure, according with the Balance of Payment Methodology of the International Monetary Fund Balance of Payment Manual 5th Edition.

Source : National Administrative Department of Statistics(NADS) and National Planning Department (NPD).

Gross domestic product growth

According to preliminary estimates by the National Planning Department (DNP) for the second quarter of 1999, the Colombian economy continue registering a reduction started in 1998. Gross Domestic Product decreased by 7,56% from the rates showed in the same period of 1998. This decrease is primarily due to the behavior of the roasted non-decaffeinated coffee (-28.48%), construction (-24.0%), manufacturing (-17.03%), trade, restaurants and hotels (-9.45%) and finance and services (-16.71%) sectors. Sectors that showed a positive rate of growth were Mining and Quarry Exploitation (8.79%). On the other hand, the social services, common and personals sector increased by 2.07%, while the transport, storage and communication showed a negative growth rate of -3.36% in the same period.

REAL GDP GROWTH BY SECTOR %

SECTOR	1990	1991	1992	1993	1994	1995	1996 pr	1997 p	1998 p	1999p Q1	1999p Q2
AGRICULTURE and CATTLE, FISHERY, FORESTRY and HUNTING	7.46	2.85	0.75	0.67	-0.28	2.56	0.87	0.38	0.60	1.22	-4.93
a. Roasted non-decaffeinated coffee 1/	24.72	3.45	9.96	16.10	-11.64	1.09	-6.35	-2.44	12.84	3.12	-28.48
b. Agriculture and Cattle without coffee	3.28	2.54	-2.10	6.59	2.92	3.19	2.94	0.73	-1.04	1.16	-0.69
c.. Fishery, forestry and hunting	3.85	5.50	1.30	-2.41	-3.05	-4.49	10.10	2.49	-4.17	-4.09	-4.44
MINING AND QUARRY EXPLOITATION	5.92	0.64	-3.88	-1.66	1.62	21.68	7.69	3.41	7.94	12.78	8.79
ELECTRICITY, GAS AND WATER	3.77	3.06	-5.80	14.03	6.16	5.08	2.84	5.29	0.87	-5.68	-4.60
MANUFACTURING 2/	1.95	2.06	1.90	4.78	3.20	3.81	-3.84	2.79	-0.28	-18.58	-17.03
CONSTRUCTION	13.07	0.25	7.26	18.20	19.23	4.21	-0.48	-3.87	11.33	-14.66	-24.00
TRADE, REPAIRS, RESTAURANTS AND HOTELS	2.82	0.43	2.55	9.14	6.08	8.23	-0.33	2.57	-0.20	-8.65	-9.45
TRANSPORT, STORAGE AND COMMUNICATION	3.74	3.44	5.33	4.35	5.80	4.74	4.51	6.26	2.57	-3.88	-3.36
Transport	1.74	2.42	5.78	4.45	5.54	3.53	3.60	1.51	0.03	-6.98	-6.77
Mail Services and telecommunications	11.99	7.25	3.72	3.96	6.78	9.13	7.65	17.92	8.70	3.25	4.35
FINANCIAL, INSURANCE, REAL STATE AND SERVICE INSTITUTIONS	6.20	4.94	3.54	5.29	13.02	8.32	4.73	3.10	-2.81	-7.46	-7.03
Finance and services 3/	9.29	6.18	4.07	6.38	18.77	13.01	5.75	2.47	10.76	-17.31	-16.71
Housing	2.90	3.53	2.92	4.00	6.10	2.00	3.20	3.33	2.82	2.19	2.35
SOCIAL SERVICES, COMMON AND PERSONALS 4/	2.75	1.03	8.51	1.05	3.81	6.86	9.44	6.01	1.66	2.18	2.07
Domestic	2.00	2.00	2.00	2.40	2.39	2.40	1.80	-1.04	-1.05	-1.05	-1.06
Public administration services (Government)	2.85	0.32	12.52	0.20	2.74	7.67	10.90	7.85	2.28	3.47	3.13
Minus: Imputed banking services	-3.36	9.30	-3.61	13.80	16.20	20.06	9.20	4.20	-	-17.55	-6.95

									14.82		
Value added subtotal	4.13	2.10	3.10	3.75	4.71	5.52	2.00	3.00	0.60	-4.71	-6.59
Plus taxes except IVA	n.a	n.a	n.a.	n.a.	n.a.	n.a.	n.a.	3.66	-2.00	-12.10	-15.17
Minus : Subventions	n.a.	n.a.	n.a.	n.a.	n.a.	n.a.	n.a.	12.30	4.00	1.85	0.15
Plus non deductible IVA	n.a.	n.a.	n.a.	n.a.	n.a.	n.a.	n.a.	6.44	-3.00	-16.21	-16.88
Plus: Duties and taxes on imports	9.76	-1.35	36.68	48.19	25.99	10.64	2.80	11.61	1.00	-30.00	-29.19
GROSS DOMESTIC PRODUCT	4.28	2.00	4.05	5.39	5.81	5.83	2.05	3.24	0.39	-5.77	-7.56

n.a.: Not available.

pr: Preliminary.

p : Provisional.

1/ Include parchment coffee and coffee thrashing.

2/ Without coffee thrashing.

3/ Until 1996, included services, non financial and non real state institutions.

4/ Include learning , social and health services.

Source: National Administrative Department of Statistics(DANE).

Balance of payments

During 1998, the Colombian balance of payments registered a current account deficit of US\$5.9 billion (5.7% of GDP), which was financed by a surplus of US\$4.7 billion (4.6% of GDP) in net capital inflows and by international reserves of US\$1.4 billion. Of the external capital flows, the resources of direct investment and long term indebtedness stand out. On the other hand, the short term financial movements registered a net inflow of US\$148 million despite of US\$1.7 billion outflow. At the end of 1998, international reserves stood at US\$8.7 billion, a reduction of US\$1.4 billion in comparison with the end of 1997. For the first quarter of 1999, the balance of payment shows a decrease in the imbalance of the current account of US\$1.4 billion, from US\$2.1 billion in 1998 to US\$694 million in 1999, explained by the fall in imports as a consequence of the deceleration economic activity. The capital and financial account registered net inflows by US\$733 million, lower in US\$805 million than the amount presented in 1998. For 1999, a US\$2.9 billion deficit in the current account is expected which will be financed by a US\$2.5 billion surplus of the financial account coming from foreign investment and from external public sector long term indebtedness.

BALANCE OF PAYMENTS 1/ (US\$ millions)

	1994 p	1995 p	1996 p	1997 p	1998 pr	1999pr Q1	1999 pro
I. CURRENT ACCOUNT	-3,625.7	-4,637.3	-4,769.8	-5,895.9	-5,908.8	-694.1	-2,929.2
Trade balance	-2,238.4	-2,639.1	-2,142.6	-2,713.9	-2,645.8	137.7	856.9
Services	-1,022.0	-1,150.2	-1,157.1	-1,466.1	-1,393.1	-308.0	-1,547.6
Net income receipts	-1,455.8	-1,606.1	-2,089.3	-2,355.0	-2,349.6	-725.3	-2,780.6
Current transfers	1,090.5	758.0	619.1	639.1	479.7	201.5	542.1
II. CAPITAL AND FINANCIAL ACCOUNT	3,421.6	4,683.8	6,715.2	6,701.0	4,743.2	732.9	2,498.0
Long-term financial flows	3,348.8	2,775.0	7,185.3	8,441.1	4,595.0	1,071.9	2,477.4
Net direct investment	1,297.5	712.2	2,794.8	4,893.7	2,508.9	436.6	1,021.3
External debt 2/	2,051.3	2,062.9	4,390.5	3,570.6	2,100.6	635.3	1,470.6
Other long-term movements	0.0	0.0	0.0	-23.2	-14.5	0.0	-14.5
Short-term financial flows	72.8	1,908.7	-470.1	-1,740.1	148.2	-339.0	20.6
Portfolio investment	-902.2	559.2	-293.7	-445.9	535.9	-409.3	911.5
Other short-term movements 3/	975.0	1,349.6	-176.4	-	-387.7	70.3	-891.0

				1,294.1			
III. OTHERS	397.8	-45.7	-223.3	-576.7	-208.4	136.9	0.0
IV. CHANGE IN NET INTERNATIONAL RESERVES	193.7	0.7	1,722.1	228.4	- 1,374.0	175.6	-431.3
V. CURRENT ACCOUNT / GDP (%)	-4.4	-5.0	-4.8	-5.4	-5.7	n.a	-3.2

p : Provisional.

pr : Preliminary.

pro : Projection.

1/ The statistics correspond to the new Balance of Payment measure, according with the Balance of Payment Methodology of the International Monetary Fund Balance of Payment Manual 5th Edition.

2/ Includes loans, commercial credit and financial lease and bonus.

3/ Includes loans and commercial credit.

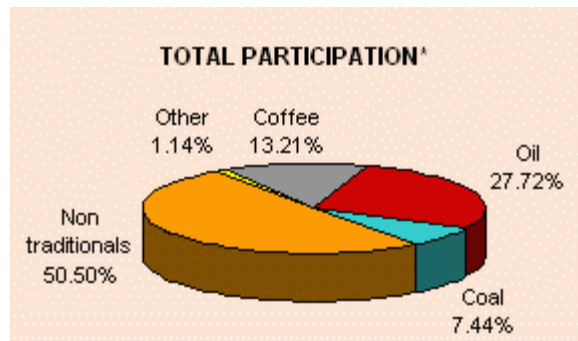
Source: Banco de la República - Economic Studies Department.

Foreign trade - Exports

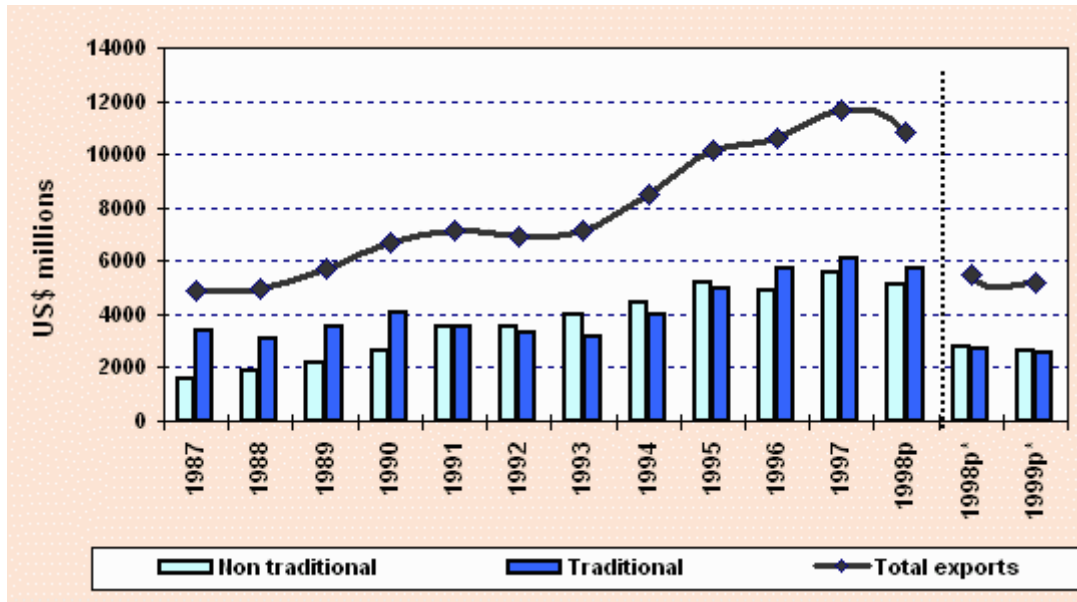
During the first semester of 1999, Colombian exports reached US\$5.2 billion, 5.1% less than that in June 1998. This behavior is primarily explained by US\$185 million (6.6%) drop in non-traditional external sales, while traditional exports fell by US\$96 million (3.6%). The reduction in exports of non-traditional goods was due to the decline in the sales of industrial goods, especially food, beverages and tobacco, transport, machinery and equipment. On the contrary, agricultural exports grew by US\$38 million, particularly bananas, fruits and vegetables and tobacco; external sales of mining goods grew by US\$17 million. On the other hand, lower traditional exports is the result of the falling of coffee (US\$325 million), coal (US\$76 million), gold (US\$14 million) and nickel (US\$7 million) sales, primarily, as a result of low international prices. The United States was the main destination for Colombian exports, purchasing 46.3% of the total, followed by the European Union with 17.6% and the Andean Group with 14.2%. For 1999, exports are expected to grow by 5.7%.

EXPORTS

EXPORTS	1999* %
U.S.A.	46.3
EUROPEAN UNION	17.6
ANDEAN GROUP	14.2
JAPAN	2.6
REST	19.3



* Up to June



US\$ Millions FOB

YEARS	Total exports	Variation %	Non traditional exports	Variation %	Traditional exports	Variation %
1987	4,914.5	-2.9	1,555.7	14.4	3,358.8	-9.2
1988	4,964.9	1.0	1,870.9	20.3	3,094.0	-7.9
1989	5,710.9	15.0	2,147.8	14.8	3,563.1	15.2
1990	6,720.6	17.7	2,664.3	24.0	4,056.3	13.8
1991	7,113.8	5.9	3,543.2	33.0	3,570.6	-12.0
1992	6,900.0	-3.0	3,564.6	0.6	3,335.4	-6.6
1993	7,115.9	3.1	3,984.4	11.8	3,131.5	-6.1
1994	8,478.8	19.2	4,469.2	12.2	4,009.6	28.0
1995	10,125.9	19.4	5,160.2	15.5	4,965.7	23.8
1996	10,586.9	4.6	4,896.1	-5.1	5,690.8	14.6
1997	11,630.5	7.2	5,542.1	6.9	6,088.4	7.4
1998 p	10,852.1	-6.7	5,134.7	-7.4	5,717.4	-6.1
1998 p*	5,502.0	-0.7	2,821.3	9.5	2,680.7	-9.6
1999 p*	5,221.0	-5.1	2,636.4	-6.6	2,584.6	-3.6

p: Provisional.

* Up to June.

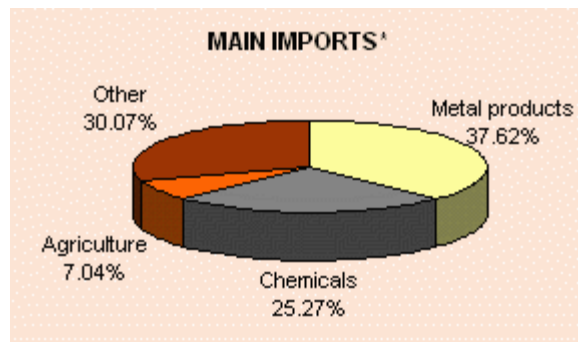
Source: National Administrative Department of Statistics(DANE).

Foreign trade - Imports

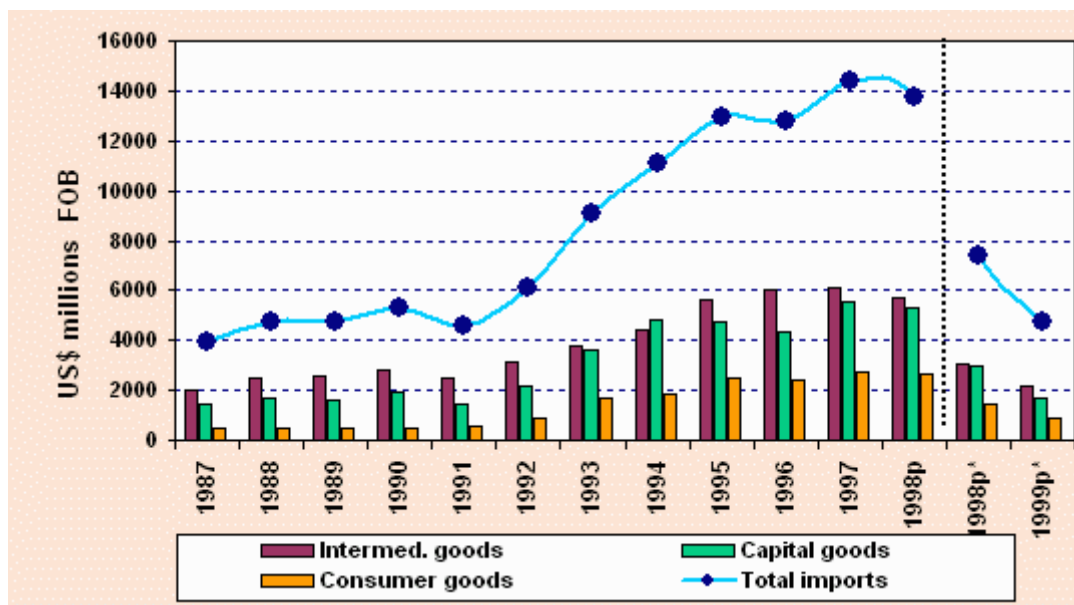
At the end of the first semester of 1999, Colombian FOB imports reached US\$4.7 billion, a US\$2.7 billion decrease equivalent to 36%. This behavior is due to the fall in capital (US\$1.2 billion, 41.3%), intermediate (US\$932 million, 30.3%) and consumer goods (US\$242 million, 37.4%) imports. The largest reductions were detected in raw material, capital goods, industry, transport equipment and in durable consumer goods. By area of origin, imports were led by the United States 42.2%, the European Union 16.8% and the Andean Group 11.4%. It is estimated that the value of imports will decrease by 20.4% during 1999.

IMPORTS

IMPORTS	1999* %
U.S.A.	42.2
EUROPEAN UNION	16.8
ANDEAN GROUP	11.4
JAPAN	4.1
REST	25.6



* Up to June



US\$ Millions FOB

YEARS	Total imports	Variation %	Intermed. goods	Variation %	Consumer goods	Variation %	Capital goods	Variation %
1987	3,919.3	7.2	2,020.7	6.1	473.5	20.3	1,425.1	4.9
1988	4,703.5	20.0	2,520.7	24.7	497.8	5.1	1,685.0	18.2
1989	4,731.4	0.6	2,601.5	3.2	481.9	-3.2	1,648.0	-2.2
1990	5,266.8	11.3	2,805.4	7.8	514.4	6.7	1,947.0	18.1
1991	4,564.8	-13.3	2,523.1	-10.1	569.9	10.8	1,471.7	-24.4
1992	6,111.7	33.9	3,113.3	23.4	867.0	52.1	2,131.4	44.8
1993	9,085.7	48.7	3,797.1	22.0	1,665.7	92.1	3,622.9	70.0
1994	11,080.3	22.0	4,448.8	17.2	1,818.6	9.2	4,812.9	32.8
1995	12,921.2	16.6	5,657.5	27.2	2,486.0	36.7	4,777.6	-0.7
1996	12,793.6	-1.0	6,045.4	6.8	2,384.3	-4.1	4,363.9	-8.7
1997	14,407.2	12.6	6,076.0	0.5	2,769.5	16.2	5,561.7	27.4
1998 p	13,726.2	-4.7	5,742.1	-5.5	2,646.1	-4.5	5,338.1	-4.0
1998 p*	7,419.6	12.6	3,069.8	5.7	1,411.2	15.8	2,938.6	19.1
1999 p*	4,745.9	-36.0	2,139.0	-30.3	883.1	-37.4	1,723.8	-41.3

p: Provisional.

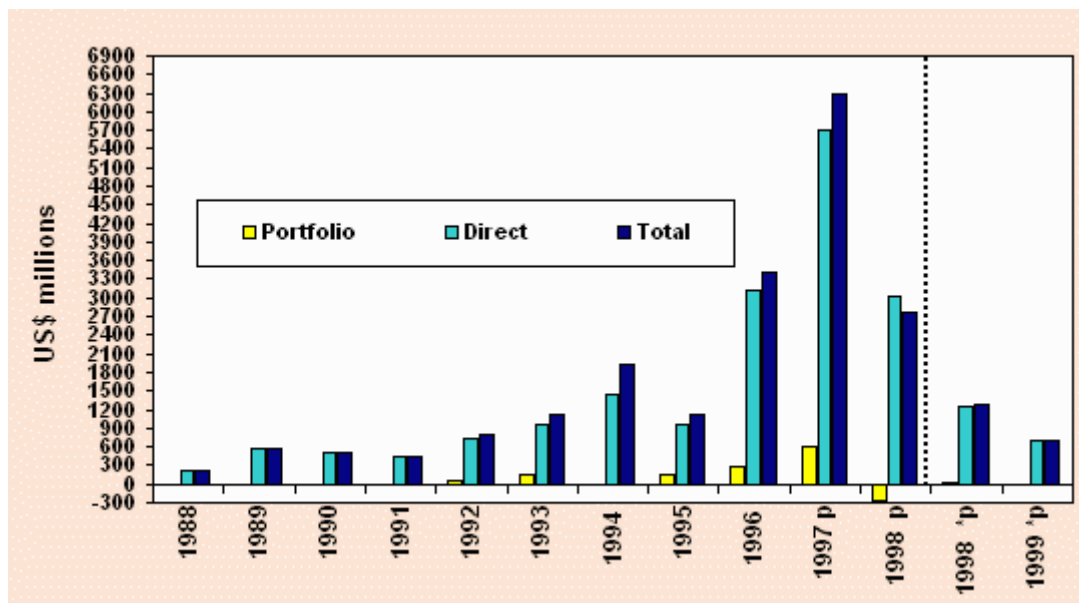
* Up to June.

Source: National Administrative Department of Statistics(DANE) and National Customs and Taxes Authority. (DIAN).

Foreign investment

During the first semester of 1999, foreign investment flows to Colombia reached US\$691million, 45.4% lower than in the same period of 1998. This reduction is explained by the lower net direct investment revenues, US\$532 million, especially those going to the communication, financial and electric sectors and to petroleum related activities, US\$208 million. Direct foreign investments was channeled primarily to the mining sector, to the manufacturing sector to the financial system and to the trade sector which together reached 73.3% of the total. Portfolio investment registered a net outflow of US\$24 million during the first semester of 1999. In the same period of 1998 portfolio investment registered a net inflow of US\$20 million. During 1999 a US\$ 1.1 billion foreign investment inflow is expected.

FOREIGN INVESTMENT



Foreign Investment 1/ US\$ millions

FOREIGN INVESTMENT	1989	1990	1991	1992	1993	1994
Total	576.2	500.5	456.9	794.7	1,104.7	1,922.5
Direct	576.2	500.5	456.9	728.7	959.7	1,444.5
Oil	359.5	269.6	264.1	439.6	557.3	132.7
Other sectors	216.7	230.9	192.8	289.1	402.4	1,311.8
Portfolio	-	-	-	66.0	145.0	478.0
FOREIGN INVESTMENT	1995	1996	1997 p	1998 p	1998*p	1999*p
Total	1,133.0	3,415.0	6,295.6	2,772.6	1,267.4	691.4
Direct	968.3	3,122.8	5,703.1	3,037.6	1,247.4	715.4
Oil	151.3	789.4	382.3	13.1	103.4	-104.1
Other sectors	817.0	2,333.4	5,320.8	3,024.5	1,144.0	819.5
Portfolio	164.7	292.2	592.5	-265.0	20.0	-24.0

p: Provisional.

* Up to first quarter.

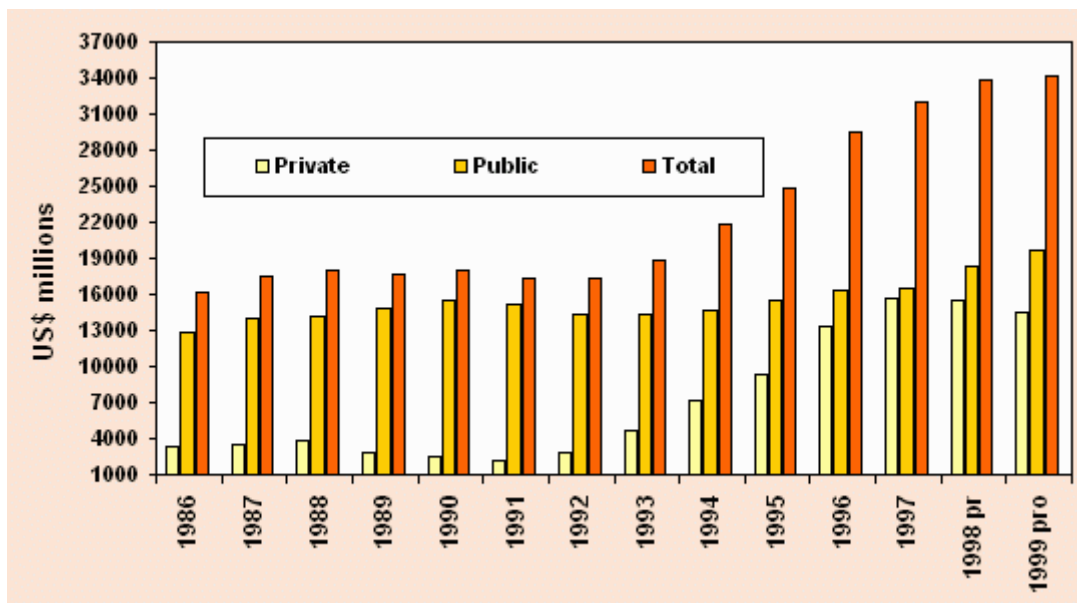
1/ Since 1994, the statistics correspond to the new Balance of Payment measure, according with the Balance of Payment Methodology of the International Monetary Fund Balance of Payment Manual 5th Edition.

Source: Banco de la República - International Exchange and Economic Studies Department.

Outstanding foreign debt

During 1998, Colombian foreign indebtedness stood at US\$33.9 billion (32.8% of GDP), with a variation of US\$1.9 billion, equivalent to 5.8% of GDP. Of this amount, 54.2% (US\$18.4 billion) corresponds to the public sector, while private foreign indebtedness was 45.8% (US\$15.5 billion). At the end of December 1999, it is estimated that the outstanding foreign debt will stand at US\$34.2 billion (37.4% of GDP), US\$337 million higher than in 1998. Of this amount, 57.5% (US\$19.7 billion) will be held by the public sector, while 42.5% (US\$14.5 billion) will correspond to the private sector. It should be noted that 97.3% of outstanding public sector is long term debt, and 2.7% is short term. In the private sector, these percentages are 78.3% and 21.6%, respectively.

OUTSTANDING FOREIGN DEBT



External debt 1/ US\$ millions

YEAR	TOTAL	% GDP	PUBLIC	% GDP	PRIVATE	% GDP
1986	16,100	46.1	12,782	36.6	3,318	9.5
1987	17,512	48.1	14,068	38.7	3,444	9.5
1988	17,935	45.7	14,134	36.0	3,801	9.7
1989	17,588	44.5	14,815	37.5	2,772	7.0
1990	17,992	44.7	15,471	38.4	2,522	6.3
1991	17,335	40.8	15,171	35.7	2,165	5.1
1992	17,278	35.1	14,416	29.3	2,862	5.8
1993	18,888	33.8	14,254	25.5	4,634	8.3
1994	21,840	26.7	14,718	18.0	7,122	8.7
1995	24,912	26.9	15,540	16.8	9,372	10.1
1996	29,512	29.7	16,251	16.4	13,262	13.3
1997	32,013	29.3	16,423	15.0	15,591	14.3
1998 pr	33,884	32.8	18,360	17.8	15,524	15.0
1999 pro	34,221	37.4	19,685	21.5	14,536	15.9

pr: Preliminary.

pro: Projected.

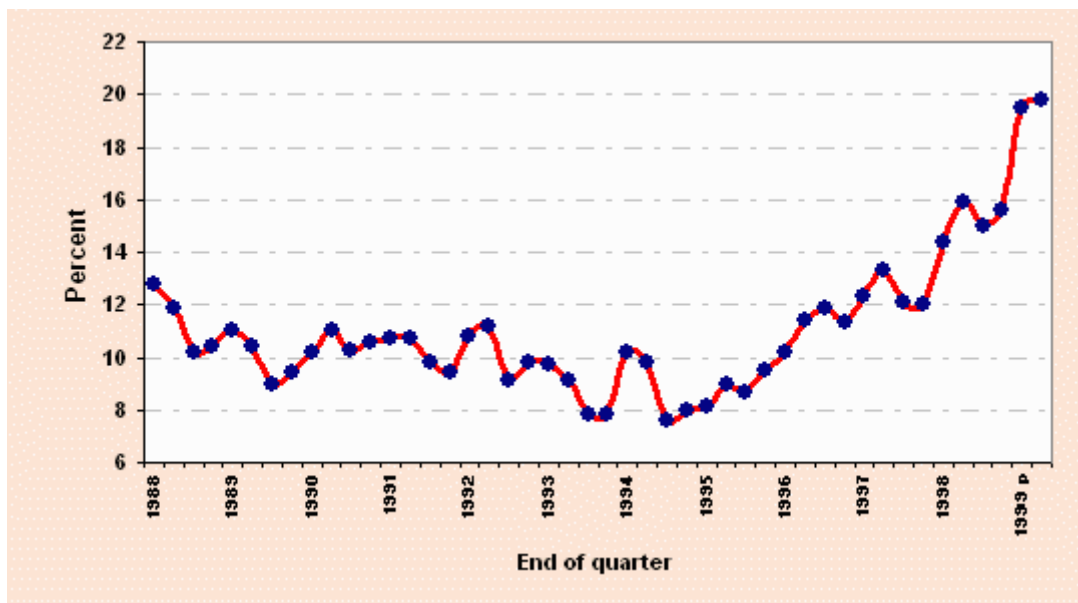
1/ Since 1994, the statistics correspond to the new Balance of Payment measure, according with the Balance of Payment Methodology of the International Monetary Fund Balance of Payment Manual 5th Edition.

Source: Banco de la República - Economic Studies and International Exchange Department.

Unemployment rate

According to the National Household Survey of the National Administrative Department of Statistics (DANE), the unemployment rate for the seven metropolitan areas was 19.8% in June 1999. Between June 1998 and June 1999 the unemployment rate grew by 3.9 percentage points, the global participation rate increase 0.1 points from 62.7% to 62.8%, and the occupation rate decreased 2.4 points from 52.8% to 50.4%. During the year the number of occupied persons for the seven metropolitan areas decreased by 123,717, while the unemployed population increased by 297,520. On the other hand, comparing June 1999 and June 1998, the economically active population for the seven metropolitan areas grew by 2.6% (173,803 persons).

UNEMPLOYMENT
Seven Cities and its Metropolitan Areas



UNEMPLOYMENT RATE %

END OF QUARTER	1988	1989	1990	1991	1992	1993
1	12.8	11.0	10.1	10.7	10.8	9.7
2	11.9	10.3	10.9	10.7	11.2	9.1
3	10.2	9.0	10.2	9.8	9.1	7.8
4	10.4	9.4	10.6	9.4	9.8	7.8

END OF QUARTER	1994	1995	1996	1997	1998	1999 p
1	10.2	8.1	10.2	12.3	14.4	19.5
2	9.8	9.0	11.4	13.3	15.9	19.8
3	7.6	8.7	11.9	12.1	15.0	
4	8.0	9.5	11.3	12.0	15.6	

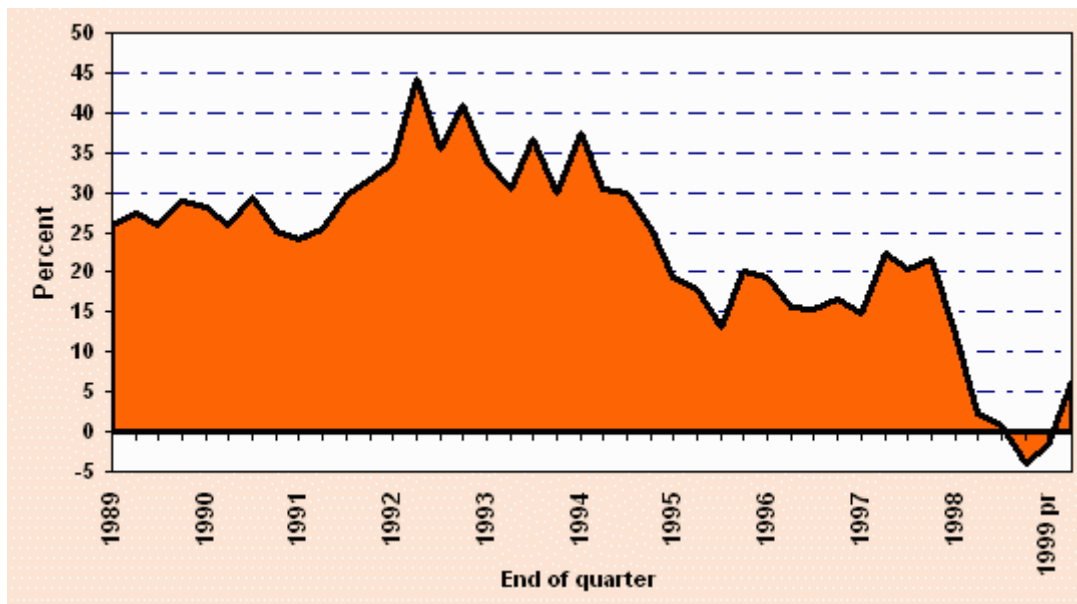
p: Provisional.

Source: National Administrative Department of statistics (DANE).

Money growth

At the end of the second quarter of 1999, the money supply was Col. \$9,518 billion, 6.3% higher than on June 27 of 1998. This is explained by an increase of cash holdings 29.4% and by the reduction in official and private current account deposits, which registered growth of 8.8% in the same period.

MONEY GROWTH (M1)
Annual Variation



MONEY GROWTH
(Annual Variation %)

END OF QUARTER	1989	1990	1991	1992	1993	1994
1	25.8	28.1	24.1	33.7	34.0	37.4
2	27.3	26.0	25.5	44.1	30.4	30.4
3	26.0	29.4	29.7	35.5	36.6	30.0
4	28.9	25.2	31.7	41.0	30.0	25.3
END OF QUARTER	1995	1996	1997	1998	1999 pr	

1	19.4	19.3	14.9	12.2	-1.7	
2	17.9	15.6	22.5	2.2	6.3	
3	13.1	15.3	20.4	0.9		
4	20.2	16.5	21.7	-3.9		

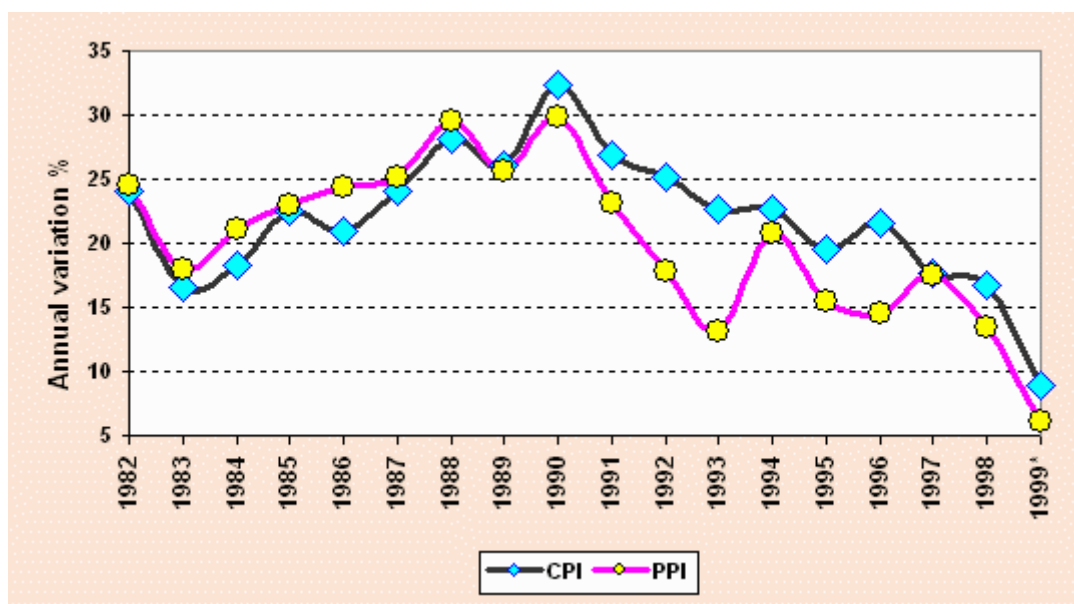
pr: Preliminary.

Source: Banco de la República - Economic studies.

Consumer and producer price indices

The annual inflation rate in June 1999, calculated by the Consumer Price Index (CPI) stood at 9.0%, 11.7 percentage points lower than in 1998. The sectors that registered an annual variation lower than the average were food 0.3% and clothes 5.3%; the rest (housing 11.4%, health 19.0%, education 12.9%, transport 16.8% and others 13.0%), exhibited annual variations higher than the average. On the other hand, the annual variation of the Producer Price Index (PPI) stood at 6.1%. Prices of imported goods increased 11.4%, while those for domestic goods increased 5.4%.

CONSUMER AND PRODUCER PRICES INDEX %



PRICE INCREASES
Annual variation %

END OF PERIOD	CPI	PPI	END OF PERIOD	CPI	PPI
1982	24.03	24.59	1991	26.82	23.06
1983	16.64	17.96	1992	25.14	17.88
1984	18.28	21.19	1993	22.61	13.19
1985	22.45	22.98	1994	22.60	20.73
1986	20.95	24.38	1995	19.47	15.43
1987	24.02	25.17	1996	21.64	14.54

1988	28.12	29.52	1997	17.68	17.49
1989	26.12	25.62	1998	16.70	13.50
1990	32.37	29.90	1999*	8.97	6,06

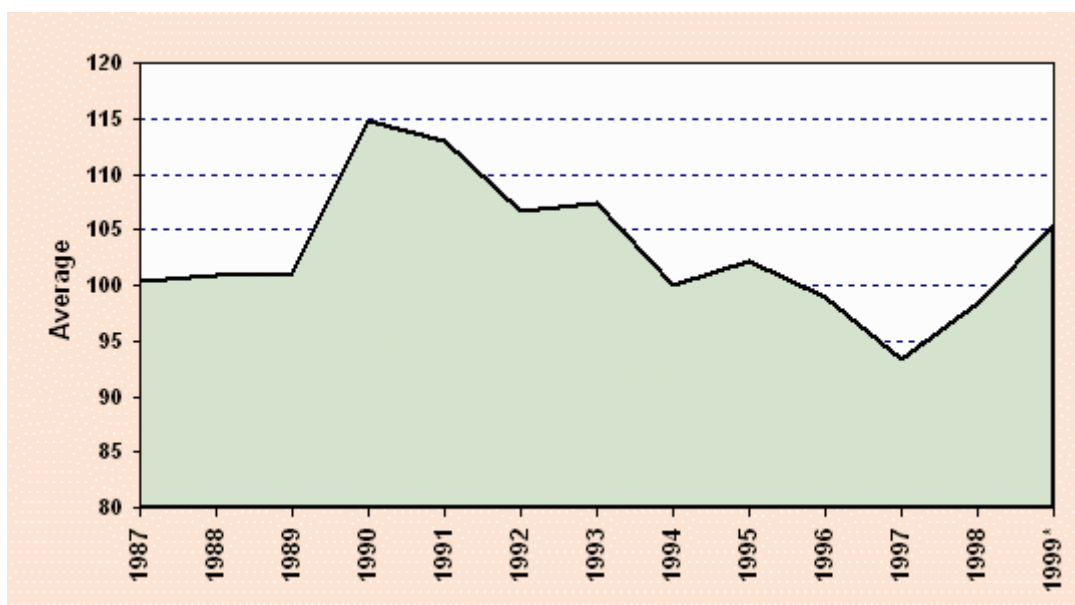
* Annual variation in June

Source : CPI National Administrative Department of Statistics (DANE).
PPI Banco de la República - Economic Studies.

Exchange rate

At the end of June 1999, the Market Exchange Rate stood at Col \$1,732.10 per US dollar. Annual devaluation reached 27.1%, 1.9 percentage points higher than in June 1998. On the other hand, the Real Exchange Rate Index stood at 105.37, indicating a real appreciation of 1.73% in the first semester of 1999.

REAL EXCHANGE RATE INDEX



REAL EXCHANGE RATE INDEX
No Traditional Trade
Goemetrical Average 1994 = 100

NOMINAL
EXCHANGE RATE DEVALUATION %

PERIOD	AVERAGE	PERIOD	AVERAGE
--------	---------	--------	---------

END OF PERIOD	ANNUAL VARIATION	END OF PERIOD	ANNUAL VARIATION
---------------	------------------	---------------	------------------

1987	100.42	1994	100.00	1987	20.41	1994	3.35
1988	100.85	1995	102.08	1988	27.36	1995	18.81
1989	101.12	1996	98.90	1989	29.20	1996	1.79
1990	114.76	1997	93.31	1990	31.07	1997	28.67
1991	113.00	1998	98.40	1991	12.29	1998	19.21
1992	106.74	1999*	105.37	1992	15.56	1999**	27.08
1993	107.46			1993	8.99		

* Average January - June.

** Annual variation in June.

Source: Banco de la República - Economic Studies.

Public sector

During the first quarter of 1999, the non-financial public sector registered a surplus of Col. \$415 billion, equal to 0.25% of GDP. It is worth mentioning that some public entities execute a large share of their expenditures during the second semester of the year which permits them to have temporary surpluses in the first months. The financial cash flow results of the first quarter for the non-financial public sector seem to fall under this interpretive pattern when the registered surpluses are contrasted with the consolidated deficit goal of 2.94% of the GDP for the year. The National Government presented the greatest fiscal imbalance equivalent to 0.75% of GDP in contrast with its annual deficit goal of 4.03% of GDP. The Social Security Fund continued to show the largest surpluses, 0.52% of GDP. The annual target of this sector is a surplus of 0.72%. Finally, the financial results of other agencies such as Ecopetrol and The National Coffee Fund registered surpluses of 0.15% and 0.03% of GDP, respectively.

NON FINANCIAL PUBLIC SECTOR REVENUES, EXPENDITURES AND DEFICIT

Billon of pesos

ENTITIES	1998				1999 1/			
	REVENUES 2/	EXPENDITURES 3/	DEFICIT (-) SURPLUS (+)	DEFICIT (-) SURPLUS (+) (% of GDP)	REVENUES 2/	EXPENDITURES 3/	DEFICIT (-) SURPLUS (+)	DEFICIT (-) SURPLUS (+) (% of GDP)
Electric sector	4,091.0	4,864.0	-773.0	-0.5	795.0	847.0	-52.0	-0.0
Ecopetrol	5,231.5	5,102.0	129.5	0.1	1,263.0	1,013.0	250.0	0.2
Carbocol	447.0	330.0	117.0	0.1	115.0	83.0	32.0	0.0
Telecom	1,403.0	1,197.0	206.0	0.1	373.0	251.0	122.0	0.1
Medellín Metro	102.0	25.0	77.0	0.1	25.0	15.0	10.0	0.0
Other entities	4,455.0	4,198.0	257.0	0.2	1,149.0	842.0	307.0	0.2
Social security	11,270.0	9,128.0	2,142.0	1.5	2,369.0	1,516.0	853.0	0.5
Local and regional entities 4/	16,673.0	16,761.0	-88.0	-0.1	4,936.0	4,874.0	62.0	0.0
National Coffee Fund	1,508.0	1,476.0	32.0	0.0	337.0	284.0	53.0	0.0
National	16,880.0	23,821.0	-6,941.0	-4.7	5,183.0	6,405.0	-1,222.0	-0.7

Government								
TOTAL	62,060.5	66,902.0	-4,841.5	-3.3	16,545.0	16,130.0	415.0	0.3

1/ Correspond to the first quarter of 1999.

2/ Do not include privatization revenues. For 1998 the privatization total is \$752 billion of pesos.

3/ Includes net loans.

4/ For 1999, correspond to the National Royalties Fund (FNR).

Source: Council for Fiscal Policy (CONFIS) and National Planning Department - (DNP).
