

# ECONOMIC INDICATORS

First Quarter of March 2000



*Banco de la República*  
*Colombia*

**FRONT PAGE**  
**ROBERTO MATTA**

Lithography

BANCO DE LA REPÚBLICA COLLECTION

## Economic Performance in 2000

During the first quarter of year 2000 important economic achievements were reached. First of all, the GDP presented an annual growth of 2.23%, this represents the first positive growth after 6 quarters of negative rates. Second, during this first quarter, the balance of payments current account deficit showed a small moderation on its growth; it fell from a 1.1% of GDP at the end of 1999 to a 0.9% in first quarter of year 2000. Inflation rate, measured with the Consumer Price Index, presented in March a value of 9.7%, even though this was 0.5 percentage points higher than the one observed in December 1999, it stills represents one of the lowest ever registered since 1970. At the same time, the Producer Price Index stood at a value of 13.7%, 1 percentage point over the one observed in December 1999. On the other hand, the unemployment rate reached in March the value of 20.2% (2.2 percentage points higher than the one observed in December 1999), becoming one of the highest levels of unemployment ever seen in the history of the country.

### ECONOMIC PERFORMANCE IN 2000

YEARS	GROWTH			UNEMPLOYMENT RATE (%)	CURRENT ACCOUNT (% of GDP)	INTERNATIONAL RESERVES (Months of imports of goods and services)
	GDP (%)	CPI (%)	PPI (%)			
1990	4.3	32.4	29.9	10.6	1.3	5.9
1991	2.0	26.8	23.1	9.4	5.5	8.9
1992	4.1	25.1	17.8	9.8	1.8	8.8
1993	5.4	22.6	13.2	7.8	-4.0	6.9
1994	5.8	22.6	20.7	8.0	-4.5	7.0
1995	5.2	19.5	15.4	9.5	-5.1	6.3
1996	2.1	21.6	14.5	11.3	-5.0	7.2
1997	3.4	17.7	17.5	12.0	-5.6	6.5
1998	0,48 p	16.7	13.5	15.6	-5,3 p	6,0 p
1999	-4,29 p	9,2	12.7	18,0 p	-1,1 p	7,1 p
2000	2.23 p*	9,7 *	13.7*	20,2 p*	-0,9 p*	7,0 p*

p: Provisional.

\*: Up to March.

Since 1994, the statistics correspond to the new measurement of the Balance of Payment, according to the Balance of Payment Methodology of the 5th Edition International

## Gross domestic product growth

According to the National Statistics Administrative Department's (DANE), the Gross Domestic Product annual growth, for the first quarter of year 2000, was 2.23%, this registers a positive annual growth rate after 6 quarter of negatives rates. It is outstanding, that the economy was decreasing in annual rates of -0.98% in the fourth quarter of 1999, -3.66% in the third, -6.74% in the second and -5.64% in the first. Most of the sectors registered positive points in their annual variation, except the construction sector and the financial sector that registered negatives growth rates of -6.14% and -1.04% respectively. On the other hand, the sectors with the mayor growth rate were, manufacturing industry, which grew 8.88%, the highest of the past periods, and electricity, gas and water with a 4.06%.

### REAL GDP GROWTH BY SECTOR %

SECTOR	1995	1996	1997	1998 p	1999 p	2000 p
AGRICULTURE and LIVESTOCK, FISHING, FORESTRY and HUNTING	3.73	-1.24	0.65	0.60	-0.19	1.47
MINING AND QUARRY EXPLOITATION	14.57	7.29	3.69	6.66	4.86	1.44
ELECTRICITY, GAS AND WATER	2.58	4.90	0.96	0.86	-3.48	4.06
MANUFACTURING INDUSTRY	5.54	-1.38	0.51	-0.28	12.43	8.88
CONSTRUCTION	1.90	12.94	2.18	11.98	24.27	-6.14
COMMERCE, REPAIRS, RESTAURANTS AND HOTELS	3.83	-0.91	1.68	-0.20	-8.91	2.85
TRANSPORT, STORAGE AND COMMUNICATION	6.51	3.83	5.82	3.45	-2.85	2.85
FINANCIAL, INSURANCE, REAL STATE AND SERVICE INSTITUTIONS	8.63	5.17	4.92	-2.56	-6.14	-1.04
SOCIAL SERVICES, COMMON AND PERSONAL	8.96	16.18	7.19	1.68	3.97	1.35
Minus: Imputed banking services	26.00	16.74	2.72	14.81	23.31	-7.26
Subtotal value added	5.20	2.15	3.47	0.67	-3.58	2.39
Plus taxes except IVA	1.41	3.16	-4.28	-1.23	-7.43	-8.00
Minus: Subsidies	-0.87	8.00	9.14	5.03	1.14	27.02
Plus non deducible IVA	5.26	-0.04	5.84	-2.57	13.53	4.19
Plus: Duties and taxes on imports	12.06	0.90	10.60	0.86	18.58	10.62

<b>GROSS DOMESTIC PRODUCT</b>	<b>5.20</b>	<b>2.06</b>	<b>3.43</b>	<b>0.48</b>	<b>-4.29</b>	<b>2.23</b>
-------------------------------	-------------	-------------	-------------	-------------	--------------	-------------

**p** : Provisional.

**Source:** National Administrative Department of Statistics(DANE).

---

## Balance of payments

At the end of the first quarter of the year 2000, the Colombian balance of payments decreased substantially in its Current Account deficit, passing from US\$685 million (3.0% of the quarter's GDP) in 1999, to US\$185 million (0.9% of the quarter's GDP) in 2000. The primary reason for this reduction was the accelerated growth of exported goods (28.7%), in contrast to that of imports (10.6%). To a lesser extent, the reduction was also due to greater net transfers (14.0%). On the other hand, the capital and financial accounts registered a US\$60 million net capital outflows in their net capital outflows, in contrast to net capital inflows of US\$625 million during the same period of 1999. This significant adjustment was due to reduced long-term capital inflows (US\$733 million) and to the increase of short term net capital outflows (US\$46 million). The decrease of long term capital flows was due to the reduction of portfolio and direct foreign investment and to the decrease of the private sector's external debt. Conversely, the increase of short-term capital outflows is explained by the growth of portfolio investment abroad and by the reduction of the financial sector's short-term indebtedness. International reserves decreased from US\$8.8 billion in 1999 to US\$8.3 billion in March 2000. This is the equivalent of 9.2 months of goods' imports, 7.2 months of goods' and services' imports, and 2.2 times the short-term external debt balance.

### BALANCE OF PAYMENTS <sup>1/</sup> (US\$ millions)

	1996	1997	1998 p	1999 p I Quarter	1999 p II Quarter	1999 p III Quarter	1999 p IV Quarter	1999 p	2000 p I Quarter
<b>I. CURRENT ACCOUNT</b>	-4,825.6	-5,952.9	-5,270.3	-685.2	-181.5	-28.1	-81.7	-976.5	-184.6
Trade balance	-2,140.5	-2,712.0	-2,511.6	99.7	433.3	685.7	515.7	1,734.4	568.5
Non-factorial services	-1,191.9	-1,504.0	-1,467.9	-341.2	-351.4	-328.4	-355.7	1,376.6	-316.2
Factorial income	-2,089.9	-2,350.5	-1,734.8	-626.3	-491.0	-536.3	-470.3	2,124.0	-645.1
Current transfers	596.7	613.6	444.0	182.6	227.6	150.9	228.6	789.6	208.2
<b>II. CAPITAL AND FINANCIAL ACCOUNT</b>	6,704.1	7,091.6	4,529.2	625.9	128.4	-257.2	-127.2	369.9	-60.2
<b>Long-term financial flows</b>	7,174.2	8,377.0	4,553.7	971.7	849.5	-230.6	715.5	2,306.3	239.3
Net direct investment	2,783.7	4,829.6	2,432.5	400.3	395.2	61.3	154.8	1,011.6	27.2
External debt <sup>2/</sup>	4,390.5	3,570.6	2,135.8	571.4	454.4	-291.8	560.7	1,294.6	212.0
Other long-term	0.0	-23.2	-14.5	0.0	0.0	0.0	0.0	0.0	0.0

movements									
<b>Short-term financial flows</b>	-470.1	-	-24.6	-345.9	-721.2	-26.6	-842.7	-	-299.4
Portfolio investment	-293.7	-23.7	394.1	-469.6	-152.3	45.1	-828.6	-	-81.9
Other short-term movements 3/	-176.4	-	-418.6	123.8	-568.9	-71.7	-14.1	-	-217.5
<b>III. OTHERS</b>	-151.8	-861.3	-649.0	224.3	-159.6	-306.3	526.4	284.8	284.8
<b>IV. CHANGE IN NET INTERNATIONAL RESERVES</b>	1,726.6	277.4	-	165.0	-212.7	-	317.5	-	138.0
<b>V. CURRENT ACCOUNT / GDP (%) 4/</b>	-5.0	-5.6	-5.3	-3.0	-0.8	-0.1	-0.4	-1.1	-0.9

p: Provisional.

1/ The statistics correspond to the new measurement of the Balance of Payments, according to the Balance of Payments Methodology of the 5th Edition International Monetary Fund Balance of Payments Manual .

2/ Includes loans, commercial credit, leases and bonds.

3/ Includes loans and commercial credit.

4/ This indicator is published by DANE and calculated according to the quarterly nominal GDP in pesos.

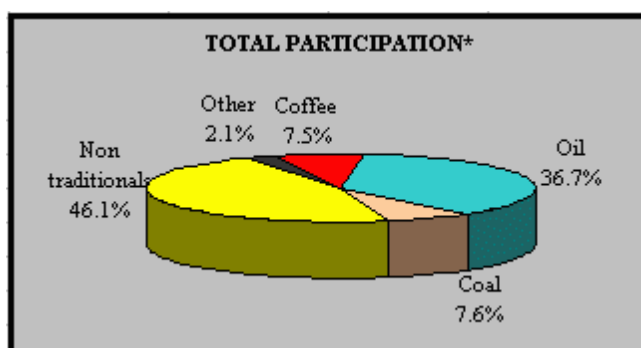
Source: Banco de la República, Economic Studies.

## Foreign trade - Exports

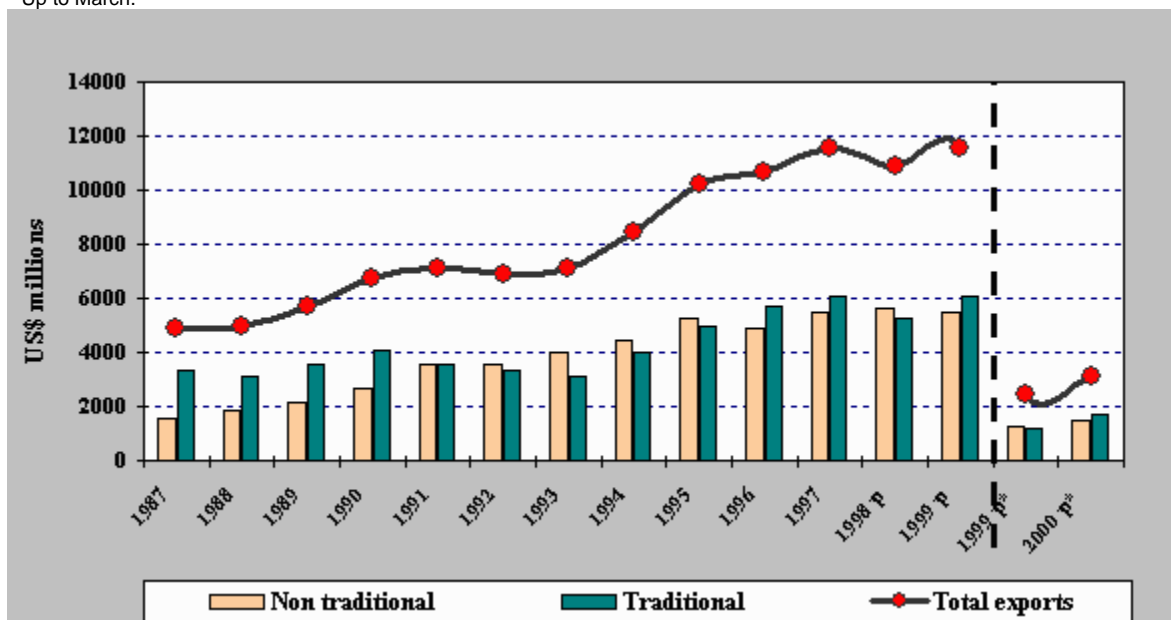
During the first quarter of the year 2000, Colombian exports reached US\$3.1 billion, increasing US\$719 million (29.7%) with respect to the same period in 1999. This result was due to the increase in revenues from external Oil (US\$518 million) and industrial good (US\$ 207 million) sales. The increased dynamism of Oil sales was due to the rise in international prices and not to the volume exported which, on the contrary, decreased. Other exports that increased to a lesser extent were coal (US\$81 million) and nickel (US\$34 million). On the other hand, coffee exports decreased by US\$105 million because of the reduction in the volume exported and the fall in international prices. Non-traditional exports reached the level of US\$1.4 billion exhibiting a positive variation of US\$192 million, due to the increase in industrial goods' sales, of which transportation materials, chemicals and textiles and leather were the most important. Mining exports grew by US\$28 million and agricultural exports decreased by US\$44 million. The United States was the main buyer of Colombian exports, purchasing 51.0% of the total, followed by the Andean Group with 14.4%, the European Union with 13.6%, and Japan with 1.5%.

### EXPORTS

EXPORTS	2000 * %
U.S.A.	51.0
EUROPEAN UNION	13.6
ANDEAN GROUP	14.4
JAPAN	1.5
REST	19.5



\* Up to March.



US\$ Millions FOB

YEARS	Total exports	Variation %	Non traditional exports	Variation %	Traditional exports	Variation %
1988	4,964.9	1.0	1,870.9	20.3	3,094.0	-7.9
1989	5,710.9	15.0	2,147.8	14.8	3,563.1	15.2
1990	6,720.6	17.7	2,664.3	24.0	4,056.3	13.8
1991	7,113.8	5.9	3,543.2	33.0	3,570.6	-12.0
1992	6,900.0	-3.0	3,564.6	0.6	3,335.4	-6.6
1993	7,115.9	3.1	3,984.4	11.8	3,131.5	-6.1
1994	8,478.8	19.2	4,469.2	12.2	4,009.6	28.0
1995	10,200.9	20.3	5,238.3	17.2	4,962.6	23.8
1996	10,653.8	4.4	4,905.5	-6.4	5,690.8	14.7
1997	11,552.8	8.4	5,463.8	11.4	6,089.0	7.0
1998 p	10,890.2	-5.7	5,596.0	2.4	5,294.2	-13.1
1999 p	11,575.4	6.3	5,492.1	-1.9	6,083.3	14.9
1999p*	2,421.2	7.4	1,255.6	5.3	1,165.6	9.7
2000p*	3,140.7	29.7	1,447.8	15.3	1,692.9	45.2

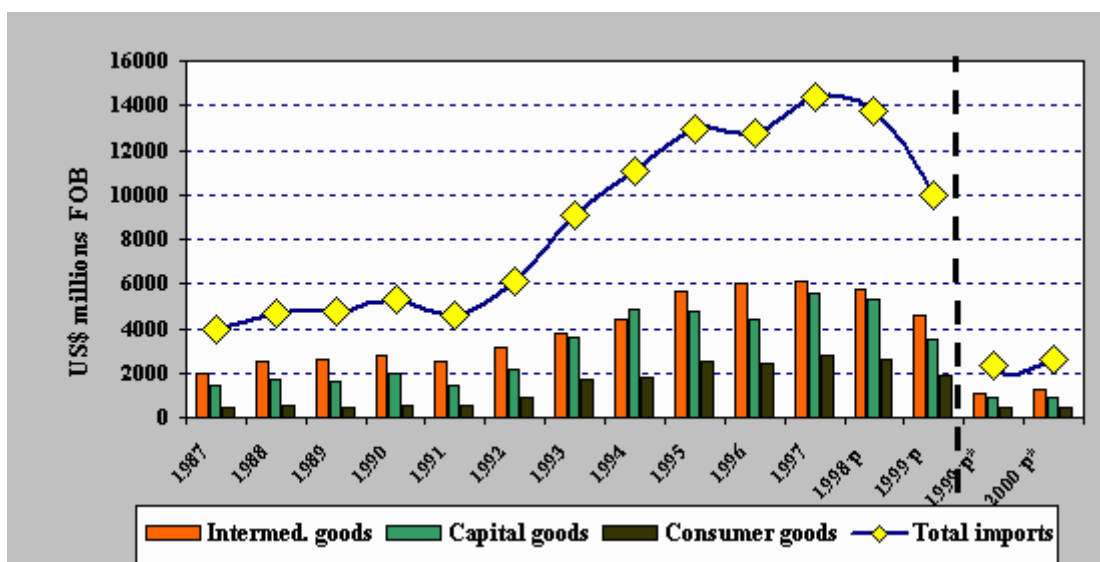
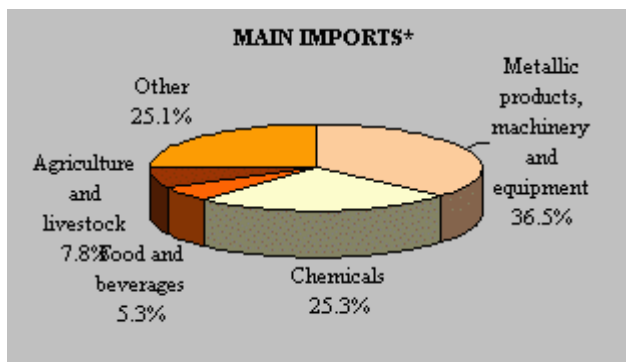
\*: Datos enero-marzo. p: Provisional. Fuente: Departamento Administrativo Nacional de Estadística (DANE).

## Foreign trade - Imports

During the first quarter of year 2000, Colombian FOB imports reached US\$2.6 billion, this represents a US\$266 million increase from that registered in the same period of 1999. This behavior was due to the increase in foreign industrial purchases, particularly chemicals, metallic products, machinery, and equipment. To a lesser extent this increase was also due to imports of agricultural origin. according to the economic use and allocation, the growth of imports resulted from an increase in the purchase of intermediate goods and raw materials (US\$2,101 million), primarily that of industrial goods and fuels. Furthermore, capital goods' imports grew by US\$42 million, due to the greater demand for transportation equipment (40.3%), and despite the fall in industrial purchases (7.9%). Consumer goods' imports showed a slight increase of US\$23 million, which is explained primarily by the rise in durable goods' purchases. By geographical regions, Colombian imports mainly came from the United States 43.0%, the European Union 13.8%, the Andean Group 12.6%, and Japan 4.2%.

### IMPORTS

IMPORTS	2000* %
U.S.A.	43.0
EUROPEAN UNION	13.8
ANDEAN GROUP	12.6
JAPAN	4.2
REST	26.4



US\$ millions FOB

YEAR	Total imports	Variation %	Intermed. goods	Variation %	Consumer goods	Variation %	Capital goods	Variation %
1988	4,703.5	20.0	2,520.7	24.7	497.8	5.1	1,685.0	18.2
1989	4,731.4	0.6	2,601.5	3.2	481.9	-3.2	1,648.0	-2.2
1990	5,266.8	11.3	2,805.4	7.8	514.4	6.7	1,947.0	18.1
1991	4,564.8	-13.3	2,523.1	-10.1	569.9	10.8	1,471.7	-24.4
1992	6,111.7	33.9	3,113.3	23.4	867.0	52.1	2,131.4	44.8
1993	9,085.7	48.7	3,797.1	22.0	1,665.7	92.1	3,622.9	70.0
1994	11,080.2	22.0	4,448.8	17.2	1,818.6	9.2	4,812.9	32.8
1995	12,921.2	16.6	5,657.5	27.2	2,486.0	36.7	4,777.6	-0.7
1996	12,793.6	-1.0	6,045.4	6.9	2,384.3	-4.1	4,363.9	-8.7
1997	14,409.3	12.6	6,076.6	0.5	2,770.1	16.2	5,562.6	27.5
1998p	13,726.2	-4.7	5,742.1	-5.5	2,646.1	-4.5	5,338.1	-4.0
1999 p	9,990.1	-27.2	4,589.8	-20.1	1,878.2	-29.0	3,522.1	-34.0
1999p*	2,350.2	-36.8	1,047.9	-28.6	428.0	-38.0	874.3	-43.9
2000p*	2,616.3	11.3	1,248.6	19.2	451.6	5.5	916.1	4.8

p: Provisional.  
\*: Up to March.

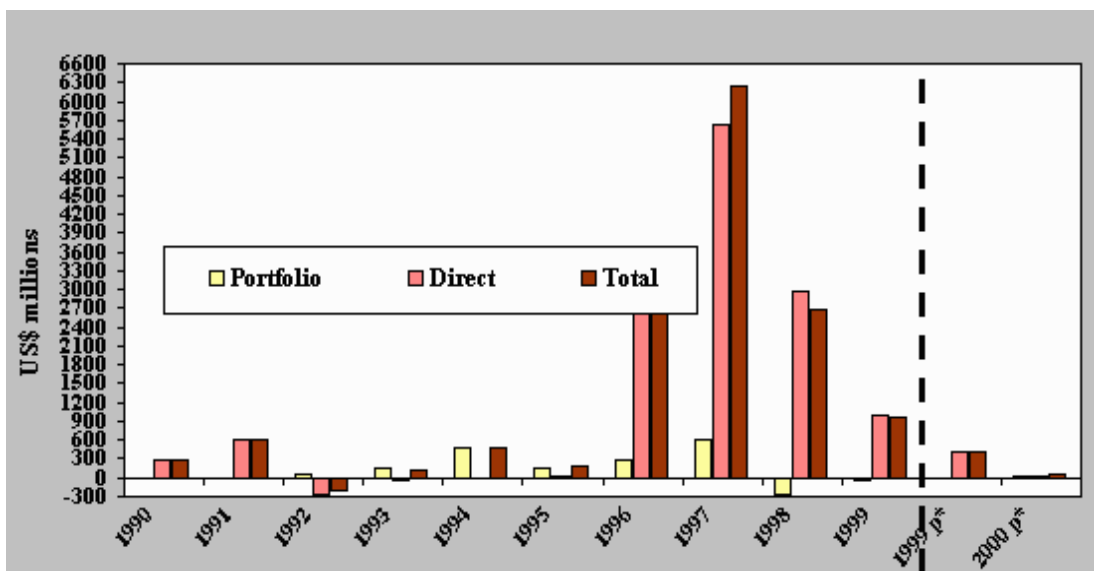
Source: National Administrative Department of Statistics (DANE) and National Customs and Taxes Authority. (DIAN).

---

## Foreign investment

During the first quarter of the year 2000, foreign investment flows to Colombia stood at US\$59 million, showing a reduction of US\$338 million from what was observed during the same period of 1999. This reduction is explained by the fall in direct net foreign investment revenues which amounted to US\$36 million, a US\$376 million decrease from the level observed during the same period of 1999. This behavior resulted from higher refunds obtained from Oil related activities (US\$424 million). On the other hand, direct foreign investment increased by US\$48 million (13.9%) amounting to US\$391 million which was primarily channeled to the financial sector (US\$162 million), and to a lesser extent, to mining activity (US\$75 million) and communications sector (US\$69 million). Furthermore, portfolio investment registered a net flow of US\$23 million, in contrast to the net outflow of US\$15 million registered during the same period of the preceding year.

### FOREIGN INVESTMENT



Foreign Investment 1/ US\$ millions

<b>FOREIGN INVESTMENT</b>	<b>1990</b>	<b>1991</b>	<b>1992</b>	<b>1993</b>	<b>1994</b>	<b>1995</b>
<b>Total</b>	500.5	456.9	794.7	1,104.7	1,924.5	1,133.0
<b>Direct</b>	500.5	456.9	728.7	959.7	1,446.5	968.4
<b>Oil</b>	269.6	264.1	439.6	557.3	134.7	151.3
<b>Other sectors</b>	230.9	192.8	289.1	402.4	1,311.8	817.0
<b>Portfolio</b>	-	-	66.0	145.0	478.0	164.7
<b>FOREIGN INVESTMENT</b>	<b>1996</b>	<b>1997</b>	<b>1998 p</b>	<b>1999 p</b>	<b>1999 p*</b>	<b>1999 p*</b>
<b>Total</b>	3,403.8	6,231.5	2,696.3	979.2	397.6	59.3
<b>Direct</b>	3,111.6	5,639.0	2,961.3	1,006.1	412.5	36.3
<b>Oil</b>	778.3	382.3	120.0	-729.6	69.7	-354.4
<b>Other sectors</b>	2,333.4	5,256.7	2,841.0	1,735.7	342.8	390.6
<b>Portfolio</b>	292.2	592.5	-264.9	-26.9	-14.9	23.0

\*: Up to March. p: Provisional.

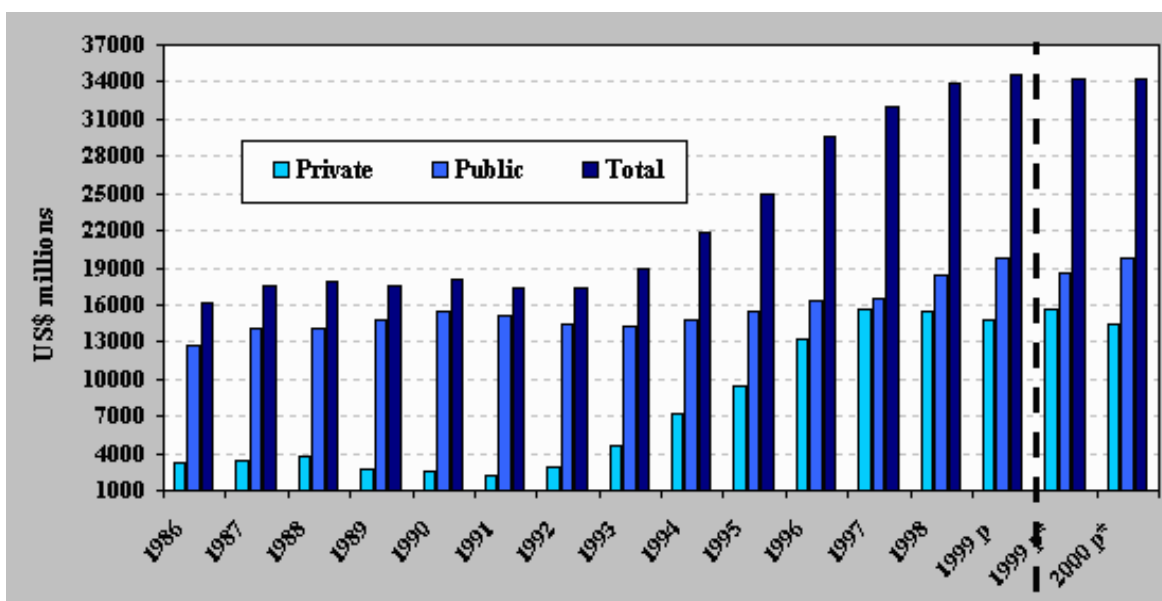
1/ Since 1994, the statistics correspond to the new measurement of the Balance of Payments, according to the Balance of Payments Methodology of the 5th Edition International Monetary Fund Balance of Payments Manual.

Source: Banco de la República, International Exchange and Economic Studies Department.

## Outstanding foreign debt

At the end of the first quarter of the year 2000, Colombian foreign debt stood at US\$34.3 billion, 0.2% higher than the level observed in the same period of 1999. This amount represents 40.8% of projected 2000 annual GDP. The increase in foreign debt is explained by the growth in the public sector's debt (US\$1.2 billion), contrasted with the private sector's debt which decreased in US\$1.1 billion. By sectors, 57.6% of the total external financing corresponds to the public sector and 42.4% to private sector agents. Of the total foreign debt, 88% (US\$30.5 billion) is long term, and 11.1% is short term (US\$3.8 billion). At the end of the year 2000, it's expected that the foreign debt will reach US\$36.0 billion of which, 59.4% will be held by the public sector and 40.6% by the private one.

### OUTSTANDING FOREIGN DEBT



External debt \*\*1/ US\$ millions

YEAR	TOTAL	% GDP	PUBLIC	% GDP	PRIVATE	% GDP
1986	16,100	46.1	12,782	36.6	3,318	9.5
1987	17,512	48.1	14,068	38.7	3,444	9.5
1988	17,935	45.7	14,134	36.0	3,801	9.7
1989	17,588	44.5	14,815	37.5	2,772	7.0
1990	17,992	44.7	15,471	38.4	2,522	6.3
1991	17,335	40.8	15,171	35.7	2,165	5.1
1992	17,278	35.1	14,416	29.3	2,862	5.8
1993	18,888	33.8	14,254	25.5	4,634	8.3
1994	21,840	26.7	14,718	18.0	7,122	8.7
1995	24,912	26.9	15,540	16.8	9,372	10.1
1996	29,511	30.4	16,249	16.7	13,262	13.7
1997	32,044	30.0	16,453	15.4	15,591	14.6
1998	33,937	34.2	18,468	18.6	15,468	15.6
1999 p	34,520	40.0	19,751	22.9	14,770	17.1
1999 p*	34,201	39.6	18,605	21.5	15,596	18.0
2000 p*	34,266	40.8	19,751	23.5	14,515	17.3
2000 pro	35,996	42.8	21,385	25.5	14,611	17.4

p: Provisional. \*: January-March. Pro: Projected

\*\* : Does not include leasing.

1/ Since 1994, the statistics correspond to the new measurement of the Balance of Payments, according to the Balance of Payments Methodology

of the 5th Edition International Monetary Fund Balance of Payments Manual.

Source: Banco de la República, Economic Studies and International Exchange Department.

## Unemployment rate

---

The unemployment rate for the seven main metropolitan areas was 20.2% in March of 2000, in the same month of 1999, this rate was of 19.5% and in December 1999, 18.0%. According to the National Household Survey of the National Administrative Department of Statistics, the metropolitan areas which registered the highest unemployment rates, were Medellin (22.2%) and Cali (21.5%), while the lowest were Pasto (16.9%) and Barranquilla (18.9%). Likewise, between March 1999 and March 2000, the number of unemployed in the seven metropolitan areas grew by 127,197 people. For the same period, the global participation rate increased 1.6 points, from 62.3% to 63.9%, and the occupation rate grew by 0.9 points, from 50.1% to 51.0%.

### UNEMPLOYMENT Seven Cities and its Metropolitan Areas

#### UNEMPLOYMENT RATE %

END OF QUARTER	1989	1990	1991	1992	1993	1994
1	11.0	10.1	10.7	10.8	9.7	10.2
2	10.3	10.9	10.7	11.2	9.1	9.8
3	9.0	10.2	9.8	9.1	7.8	7.6
4	9.4	10.6	9.4	9.8	7.8	8.0
END OF QUARTER	1995	1996	1997	1998	1999	2000 p

<b>1</b>	8.1	10.2	12.3	14.4	19.5	20.2
<b>2</b>	9.0	11.4	13.3	15.9	19.9	
<b>3</b>	8.7	11.9	12.1	15.0	20.1	
<b>4</b>	9.5	11.3	12.0	15.6	18.1	

**p:** Provisional.

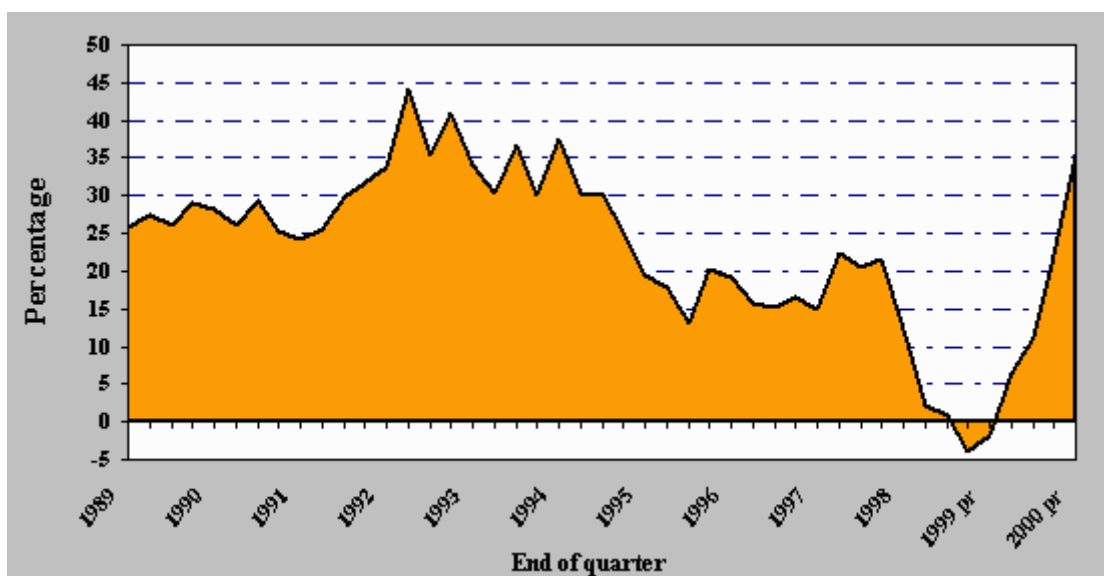
**Source:** National Administrative Department of statistics (DANE).

---

## Money growth

At the end of the first quarter of year 2000, the money supply reached Col. \$11.8 trillion with an annual variation of 35.4%. This behavior is explained by the recovery of current accounts and cash holdings which registered an annual growth of 42.8% and 26.2% respectively.

**MONEY GROWTH (M1)  
Annual Variation**



**MONEY GROWTH  
(Annual Variation %)**

END OF QUARTER	1989	1990	1991	1992	1993	1994
1	25.8	28.1	24.1	33.7	34.0	37.4
2	27.3	26.0	25.5	44.1	30.4	30.4
3	26.0	29.4	29.7	35.5	36.6	30.0
4	28.9	25.2	31.7	41.0	30.0	25.3
END OF QUARTER	1995	1996	1997	1998	1999 pr	2000 pr
1	19.4	19.3	14.9	12.2	-1.7	35.4
2	17.9	15.6	22.5	2.2	6.3	
3	13.1	15.3	20.4	0.9	11.3	

4	20.2	16.5	21.7	-3.9	22.1	
---	------	------	------	------	------	--

pr: Preliminary.

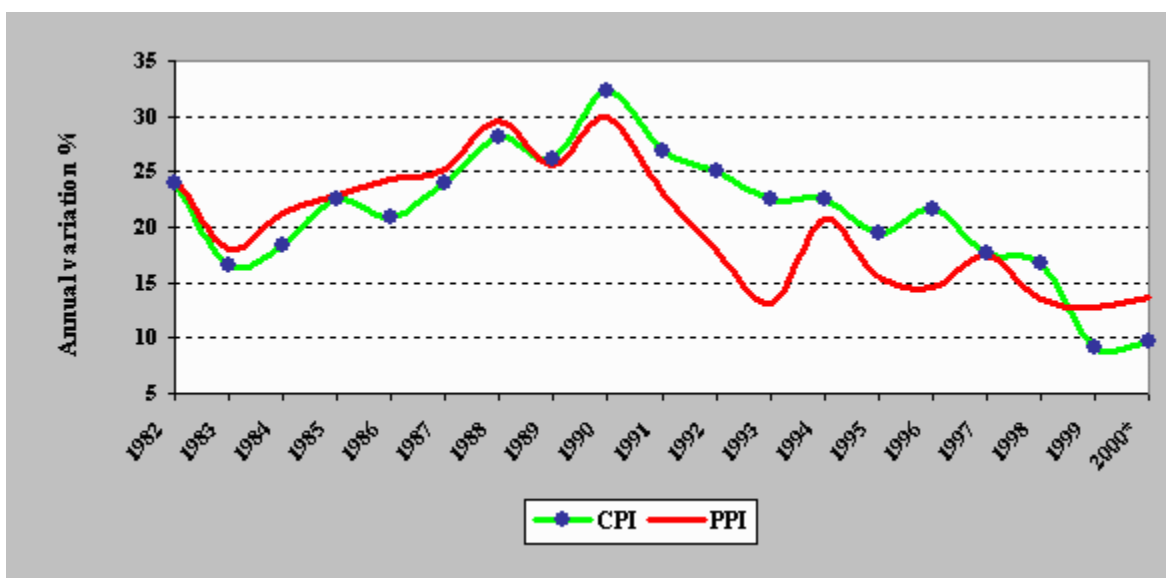
Source: Banco de la República - Economic studies.

---

## Consumer and producer price indices

In March of 2000, the consumer price index (CPI) showed an annual variation of 9.7%. The price of transportation, which increased 19.2%, represented the most significant source for this variation. The annual behavior of several other sectors, ordered according to how much they contributed to the total index was: foodstuffs 8.5%, housing 5.9%, others 19.5%, health 12.9%, education 9.6%, leisure 3.4%, clothing 2.5%. On the other hand, the annual variation of the producer price index (PPI) was 13.7%, where the 12.6% increase in the prices of produced and consumed goods in the country explains 70.8% of the PPI's is total variation, and the rest, 29.2%, is the contribution of imported goods which exhibited an annual variation of 18.7%. The annual variations grouped by economic activity were: agriculture 18.4%, mining 32.6%, and industry 12.1%. By economic use and allocation, the major variation in prices was in capital goods 16.7%, followed by final goods 14.0%, raw materials 13.1%, and construction materials 11.1%.

**CONSUMER AND PRODUCER PRICES INDEX %**



**PRICE INCREASES**  
Annual variation %

END OF PERIOD	CPI	PPI	END OF PERIOD	CPI	PPI
1983	16.64	17.96	1992	25.14	17.88
1984	18.28	21.19	1993	22.61	13.19
1985	22.45	22.98	1994	22.60	20.73

<b>1986</b>	20.95	24.38	<b>1995</b>	19.47	15.43
<b>1987</b>	24.02	25.17	<b>1996</b>	21.64	14.54
<b>1988</b>	28.12	29.52	<b>1997</b>	17.68	17.49
<b>1989</b>	26.12	25.62	<b>1998</b>	16.70	13.50
<b>1990</b>	32.37	29.90	<b>1999</b>	9.23	12.71
<b>1991</b>	26.82	23.06	<b>2000*</b>	9.72	13.68

\*: Annual Variation up to March.

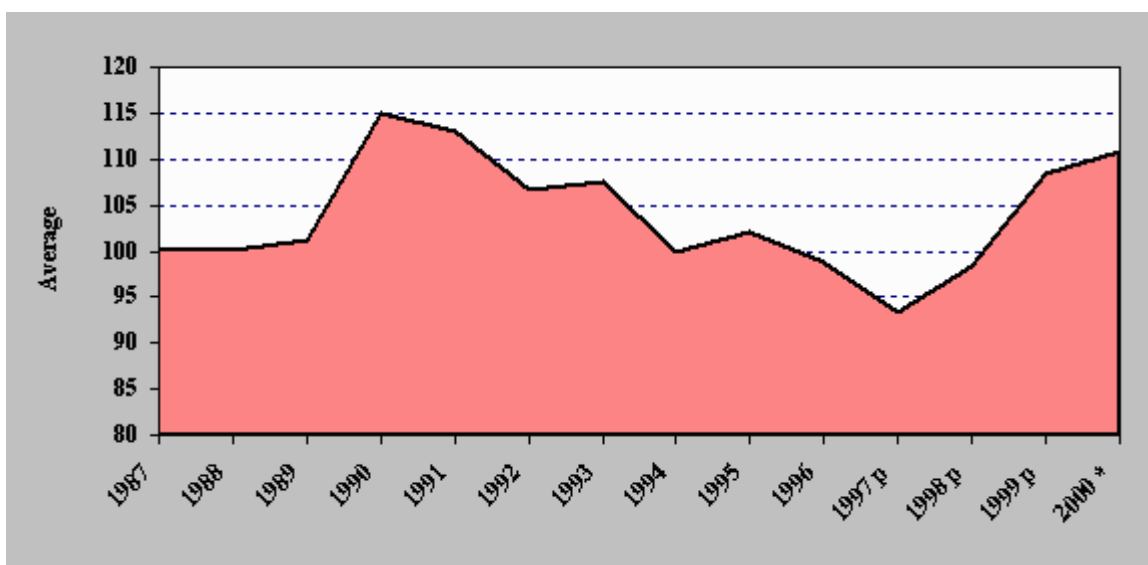
Source: CPI. National Administrative Department of Statistics (DANE), PPI. Banco de la República - Economic Studies.

---

## Exchange rate

On March of 2000, the market exchange rate stood at an average of Col. \$1,956.3 per US dollar registering a nominal devaluation of 3.6% for the first quarter. On the other hand, the Real Exchange Rate Index stood at 110.5, indicating a slight revaluation of 0.4% during the first quarter, primarily due to a greater domestic inflation (PPI 4.7%) compared with the nominal devaluation average (3.6%).

### REAL EXCHANGE RATE INDEX



**REAL EXCHANGE RATE INDEX**  
No Traditional Trade  
Goemetrical Average 1994 = 100

**NOMINAL**  
**EXCHANGE RATE DEVALUATION %**

PERIOD	AVERAGE	PERIOD	AVERAGE
1987	100.42	1994	100.00
1988	100.21	1995	102.03
1989	101.28	1996	98.83
1990	114.87	1997	93.26
1991	113.04	1998	98.32
1992	106.77	1999	108.31
1993	107.46	2000*	110.72

END OF PERIOD	ANNUAL VARIATION	END OF PERIOD	ANNUAL VARIATION
1987	20.41	1994	3.35
1988	27.36	1995	18.81
1989	29.20	1996	1.79
1990	31.07	1997 p	28.67
1991	12.29	1998 p	19.21
1992	15.56	1999 p	21.51
1993	8.99	1999 *	4.15

\*: Up to March

**p:** The Real Exchange Rate figures changed due to some price index adjustments made by the IMF. The figures of 1997 to 1999 are provisional.

**Source:** Banco de la República, Economic Studies.

---

## Public sector

Official figures show that at the end of the first quarter of the year 2000, the non-financial public sector registered a surplus of Col. \$1.3 trillion, (0.74% of GDP). The National Government presented the highest financial disequilibrium (-0.54% of GDP), while Ecopetrol and the Social Security Sector registered surpluses of 0.41% and 0.36% of GDP respectively. It's worth mentioning that in the last years, the surplus of the Social Security sector has decreased. Furthermore, Ecopetrol and the Petroleum Saving and Stabilization Fund registered positive results, due to high international Oil prices.

### NON FINANCIAL PUBLIC SECTOR REVENUES, EXPENDITURES AND DEFICIT

Billon of pesos

ENTITIES	1999				First Quarter of 2000 pr				
	REVENUES 1/	EXPENDITURES 2/	DEFICIT (-) SURPLUS (+)	DEFICIT (-) SURPLUS (+) (% of GDP)	REVENUES 1/	EXPENDITURES 2/	Adjustments 3/	DEFICIT (-) SURPLUS (+)	DEFICIT (-) SURPLUS (+) (% of GDP)
Electric sector	3,637.4	4,074.1	-436.7	-0.29	923.5	1,002.6		-79.2	-0.05
Ecopetrol	6,919.5	5,986.5	933.0	0.61	2,070.6	1,412.9	48.6	706.3	0.41
Carbocol	500.1	233.9	266.2	0.18	139.0	88.6		50.4	0.03
Telecom	1,317.3	1,387.5	-70.2	-0.05	337.2	338.3		-1.1	-0.00
Other entities 4/	5,765.4	5,077.9	687.5	0.45	1,906.2	1,171.7	193.0	927.6	0.54
Social security	13,030.4	11,515.0	1,515.5	1.00	3,107.2	2,489.7		617.5	0.36
Local and regional entities	17,949.0	18,466.9	-517.8	-0.34	4,319.1	4,353.8		-34.7	-0.02
National Coffee Fund	1,061.9	1,104.6	-42.7	-0.03	338.7	328.3		10.4	0.01
National Government	18,997.4	30,335.8	11,338.3	-7.46	6,305.4	7,838.3	609.2	-923.7	-0.54
<b>TOTAL</b>	<b>69,178.5</b>	<b>78,182.1</b>	<b>-9,003.6</b>	<b>-5.93</b>	<b>19,446.9</b>	<b>19,024.1</b>	<b>850.8</b>	<b>1,273.6</b>	<b>0.75</b>

pr: Preliminary.

1/ Does not include privatization revenues.

2/ Includes net loans.

3/ Includes, among others, crude oil securitization revenues and floating debt variation for the National Government and principal enterprises.

4/ Includes the Petroleum Saving and Stabilization Fund.

Source: Council for Fiscal Policy (CONFIS) and National Planning Department (DNP).